

Proposed Topline Structure

Exec Director of Place & Housing
Chief Officer Band H

X1.5 Business Assistants G11

Director Regeneration & Capital Growth
Chief Officer Band F

Assistant Director Housing
Chief Officer Band C

Head of Homelessness and
Access to Housing G15

Unit Manager Housing
Strategy, Policy and
Performance G15

Unit Manager Private Sector
Housing G15

Assistant Director
Strategy, Planning and Regulation
Chief Officer Band C

Strategic Transport
Lead SM2
(Fixed Term)

Service Manager Eco Dev
& Projects G17

Head of Development
Management SM2

Service Manager
Strategic planning and
infrastructure G17

Head of Development
Building Control G17

Assistant Director
Regeneration Delivery
Chief Officer Band D

Head Of Land and
Property SM2

Service Manager
Business & Investment
G17

Major Project Manager
(Radcliffe SRF) SM2

Major Project Manager
(Prestwich) SM2

Major Project Manager
(Bury) SM2 (Fixed Term)

Major Project Manager
(Brownfield Housing Sites)
SM2 (Fixed Term)

Housing Development G15

Move to Operations
Unit Manager
Private Rented Sector Enforcement G15

Current Assistant Director Strategy,
Planning and Regulation

Assistant Director
Strategy, Planning and Regulation
Chief Officer Band C

Development Management

Head of Development Management SM2

Building Control

Head of Building Control G17

Principal Planning Officer G14

Senior Planning Enforcement G12

Senior Technical Support
Officer G10

Team Leader Building Control
Officer G15

Technical Support Officer 0.5 G8

Senior Planning Officer G12

Enforcement Officer G7

Technical Support Officer G6

Senior Building Control Officer G13

Technical Support Officer 0.5 G8

Senior Planning Officer G12

Conservation Officer G11

Technical Support Officer G6

Senior Building Control Officer
Vacant G13

Technical Support Officer G8

Planning Officer Specialist G10

Technical Support Officer G4

Building Control Officer G11

Building Control Apprentice

Planning Officer G9

Technical Support Officer G4

Asst. Building Control Officer G9

CG Planning Officer G11

Planning Graduate G7

Proposed Assistant Director Strategy,
Planning and Regulation

Assistant Director
Strategy, Planning and Regulation
Chief Officer Band C

Development Management

Building Control

Head of Development Management SM2

Head of Building Control G17

Team Leader Development
Management G15

Senior Planning Officer G12

Senior Planning Officer G12

Planning Officer Specialist G10

Planning Officer G9

CG Planning Officer G11

Planning Graduate G7

Senior Planning Enforcement G12

Enforcement Officer G7

Conservation Officer G11

Senior Technical Support Officer
G10

Technical Support Officer G6

Technical Support Officer G6

Technical Support Officer G4

Technical Support Officer G4

Team Leader Building Control G15

Senior Building Control Officer G13

Senior Building Control Officer G13

Building Control Officer G11

Ass. Building Control Officer G9

Technical Support Officer 0.5 G8

Technical Support Officer 0.5 G8

Technical Support Officer G8

Business Admin Apprentice

Current Strategic Planning and Economic Development

Head of Service
Strategic Planning &
Economic Development SM2

Development Planning

Unit Manager
Development Planning G15

Senior Planning Officer G12

Senior Planning Officer G8-12

Senior Planning Officer G12

Planning & Environment Projects

Unit Manager G15
Planning Projects & Environment

Senior Planning Officer G12

Town Centres Regeneration

Unit Manager G15
Town Centres and Strategic Sites

Business Development and Liaison
Officer G10

Assistant Planning Officer G8

Data Management / GIS Officer G10

Assistant Data Management / GIS
Officer G7

Economic Strategy and European Policy

Unit Manager
Economic Strategy and European Policy
G15

Economic Business Engagement Officer
G10

Economy & Skills Officer G10

Employment and Health Officer G11

Proposed Strategy, Planning and Regulation

Assistant Director
Strategy, Planning and Regulation
Chief Officer Band C

Economic Development & Projects

- Service Manager Development & Projects G17
- Unit Manager GS15
Town Centres and Strategic Sites
- Business Development and Liaison Officer G10
- Planning Officer G10
- Unit Manager GS15
Planning Projects & Environment

Strategic Planning & Infrastructure

- Service Manager Strategic planning and infrastructure G17
- Senior Planning Officer G12
- Senior Planning Officer G12
- Senior Planning Officer G12
- Senior Planning Officer G12
- Data Management / GIS Officer G10
- Assistant Data Management / GIS Officer G7

Strategic Transportation

- Strategic Transport Lead SM2 (Fixed Term)

Current Assistant Director
Regeneration Delivery

Assistant Director
Regeneration Delivery
Chief Officer Band D

Head of Property & Asset Management
SM2

Corporate Asset Manager G16

Senior Property Asset Manager G12

Property Asset Manager G10

P/T Estate Manager G8

Business Centre G6
Vacant

Principal Surveyor G14

Senior Surveyor G13

Property Asset Records Manager G9

Property Apprentice
Vacant

Principal Survey G14
(Estates & Valuations)

Surveyor G12

Surveyor G12

Major Project Manager
(Prestwich) SM2
Fixed Term

Major Project Manager
(Radcliffe SRF) SM2
(Fixed Term)

Major Project Manager
(Bury) SM2
(Vacant) (Fixed Term)

Assistant Director (Regeneration Delivery)
Chief Officer Band D

Proposed Assistant Director
Regeneration Delivery

Land and Property

Head Of Service
Land and Property SM2

Corporate Asset Manager G16

Senior Property Asset Manager
G12

Property Asset Manager G10

Business Centre Manager G8

Clerical Assistant (Business
Centre) G6

Principal Surveyor G14

Senior Surveyor G13

Property Asset Records
Manager G9

Property Apprentice

Principal Survey G14
(Estates & Valuations)

Surveyor G12

Surveyor G12

Business & Investment

Service Manager
Business & Investment G17

Economic Business Engagement Officer
G10

Economy & Skills Officer G10

Employment and Health Officer G11

Major Projects

Major Project Manager
(Radcliffe SRF) SM2

Major Project Manager
(Prestwich) SM2

Major Project Manager
(Bury Town Centre) SM2
(Fixed Term)

Major Project Manager
(Brownfield Housing
Sites) SM2
(Fixed Term)

Housing Development
Manager G15

Housing Development
PM G11

**Current Structure Director
Regeneration and Capital Growth**

**Director Band F
Regeneration & Capital Growth**

Urban Renewal

Strategic Housing

Housing Development

Strategic Housing G13

**Housing Development
Manager G15**

**Unit Manager
Adaptations & Energy G15**

**Unit Manager
Policy & Development G15**

**Senior Technical Support & Systems Officer
G8**

**Environmental Health Officer / Senior Urban
Renewal Officer G12**

Urban Renewal Officer G10

**Senior/Environmental Health
Officer/Trading Standards Officer G12**

Urban Renewal Officer G10

Empty Property Officer G10

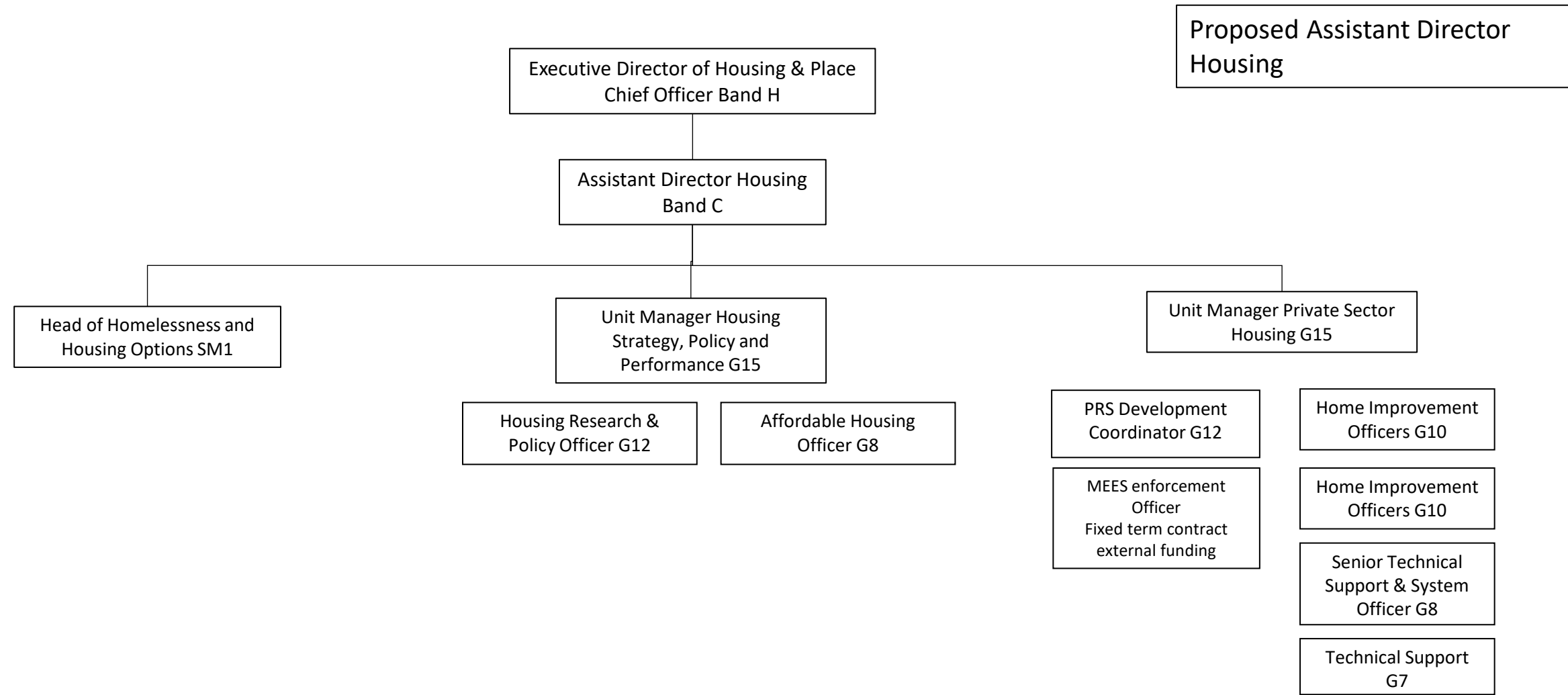
Policy & Development Officer - Energy G10

**MEES enforcement Officer
Fixed term contract external funding**

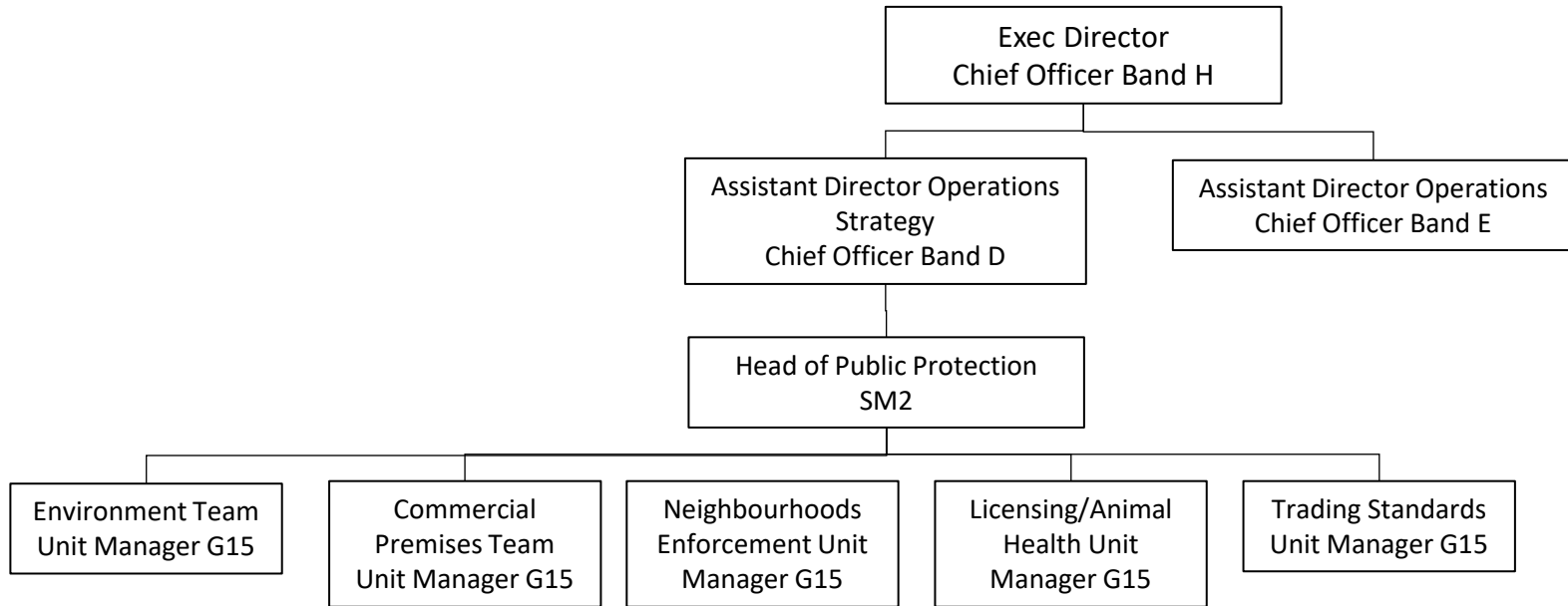
Technical Support Officer G7

**Corporate Core
Deputy Chief Executive**

**Head of Housing Needs &
Options G15**



Current Operations enforcement team



Proposed Operations enforcement team

Exec Director
Chief Officer Band H

Assistant Director Operations
Strategy
Chief Officer Band D

Assistant Director Operations
Chief Officer Band E

Head of Public Protection
SM2

Environment Team Unit
Manager G15

Commercial Premises
Team Unit Manager G15

Neighbourhoods
Enforcement Unit
Manager G15

Licensing/Animal Health
Unit Manager G15

Trading Standards Unit
Manager G15

Private Rented Sector
Enforcement Unit Manager
G15

Environmental Health
Officer (PRS enforcement)
G12

Environmental Health
Officer (PRS enforcement)
G12

Empty Homes Officer G10

Technical Support Officer
G8